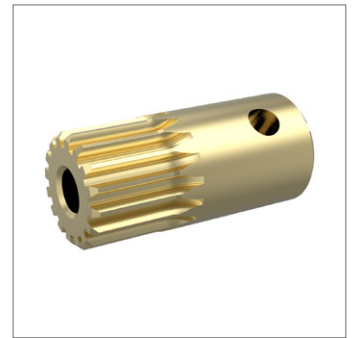
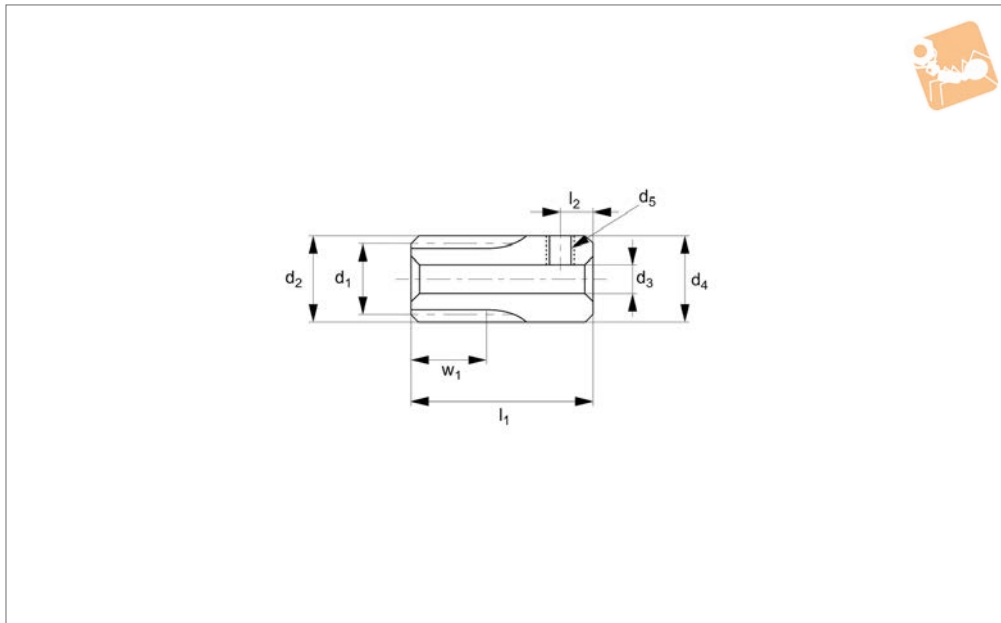




Spur Gears - Module 0.3

brass - 14-18 teeth



R5100

STANDARD SPUR GEARS

Material

Brass (C3604B).
Accuracy to JIS B 1702-1 (ISO) class 9.

Technical Notes

20° pressure angle, full depth tooth.
Amount of backlash when assembling

gears = 0,006 - 0,018 mm.

Tips

For module 0.3 brass gears with 20-120 teeth see R5101. Max. allowable torque (Nm) is based on standard operating conditions (see technical pages) with a

safety factor of 1.2. For non standard applications apply a suitable safety factor depending on frequency of use, type of working etc.

Order No.	Module	No. of teeth z	Pitch dia. d ₁	d ₂	w ₁	d ₃ tol. H8	d ₄	l ₁	Thread d ₅	l ₂	Torque Nm max.	Weight g
R5100.030-014	m 0.3	14	4.2	4.8	4	2	5.0	12	M 1,6	2.5	0.031	1.5
R5100.030-015	m 0.3	15	4.5	5.1	4	2	5.5	12	M 1,6	2.5	0.034	1.8
R5100.030-016	m 0.3	16	4.8	5.4	4	2	5.5	12	M 1,6	2.5	0.038	1.9
R5100.030-018	m 0.3	18	5.4	6.0	4	2	6.0	12	M 2,0	2.5	0.046	2.3