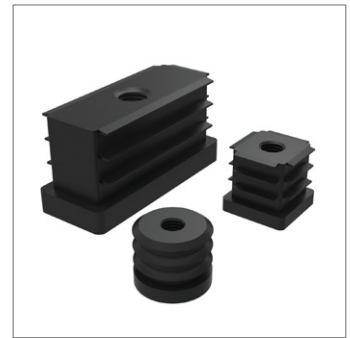
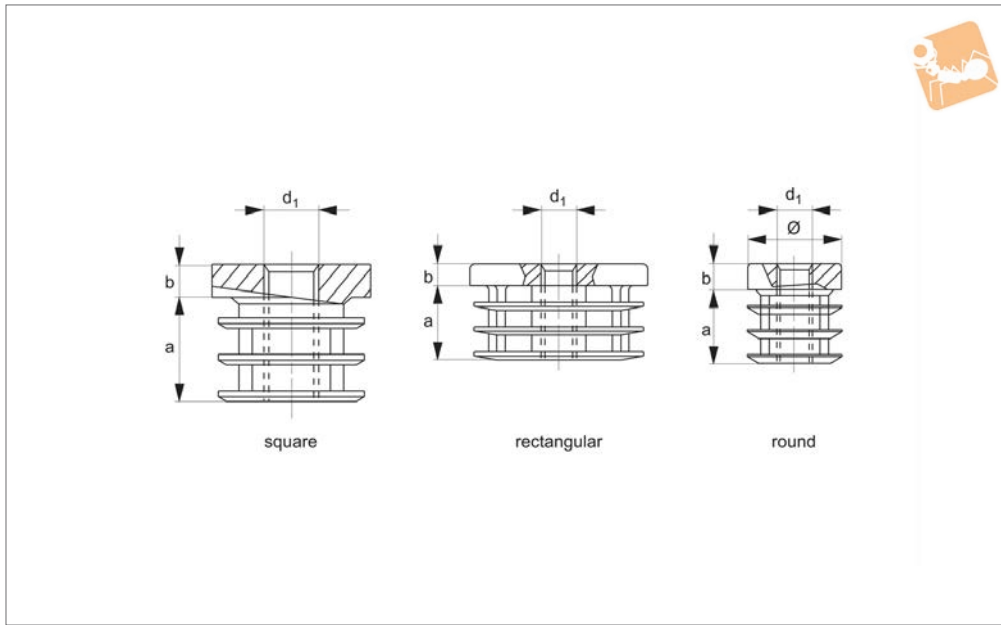




Threaded Plastic Inserts for Hollow no bush



P1970

OTHER MECHANICAL PARTS

Material

Thermoplastic, black. Moulded thread.

Technical Notes

For use with fixed feet.

Tips

M 8 available on request, subject to minimum order quantity.

Order No.	Type	Tube size mm	d_1	a	b
P1970.40-40	Square	40x40	M10	22	6