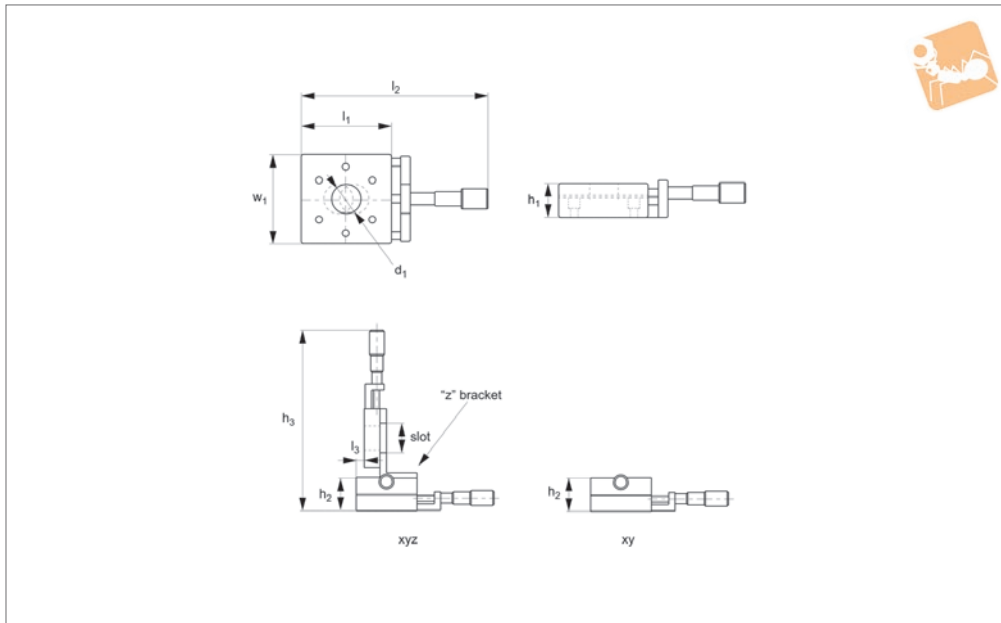
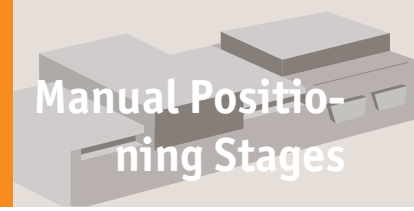




Micrometer Positioning XY, XYZ

front drive, large sizes

Manual Positioning Stages



L3108

MANUAL POSITIONING STAGES

Material

Aluminium carriage and base, black anodised steel fixing, hardened steel shafts and balls and roller elements.

Technical Notes

Ball roller versions recommended for light loads. Cross roller versions for heavier loads and moment loads.

Straight line accuracy 12µ/25mm travel. Repeatability 3µ.

Spring loaded micrometer allows precise repeatable adjustments with low friction and zero backlash.

Micrometer increments 0,01mm.

For further fixing and mounting hole dimensions please see part number L3100.FH.

Tips

Other options:
- LM (locking micrometer).

- PL (posi-lock carriage lock).

Loads on the Z axis may extend springs if the loads are too heavy. These stages have the micrometer bracket reversed to prevent this and increase the Z load capacity.

Important Notes

Stroke is centred on the mid-point of the slides (ie 50% of total stroke each way).

3D CAD available.

Order No.	Type	Travel	h ₁	h ₂	h ₃	l ₁	l ₂	l ₃	w ₂	Weight kg
L3108.1201-XYB	XY Ball	25	23.1	46.2	-	79.2	184.2	-	79.2	13.6
L3108.1203-XYB	XY Ball	25	23.1	46.2	-	79.2	184.2	-	79.2	13.6
L3108.2201-XYB	XY Ball	25	23.1	46.2	-	104.6	209.6	-	104.6	13.6
L3108.2202-XYB	XY Ball	50	23.1	46.2	-	104.6	260.4	-	104.6	13.6
L3108.2203-XYB	XY Ball	25	23.1	46.2	-	104.6	209.6	-	104.6	13.6
L3108.2204-XYB	XY Ball	50	23.1	46.2	-	104.6	260.4	-	104.6	13.6
L3108.3201-XYB	XY Ball	25	23.1	46.2	-	130.2	235.0	-	130.2	13.6
L3108.3202-XYB	XY Ball	50	23.1	46.2	-	130.2	285.8	-	130.2	13.6
L3108.3203-XYB	XY Ball	25	23.1	46.2	-	130.2	235.0	-	130.2	13.6
L3108.3204-XYB	XY Ball	50	23.1	46.2	-	130.2	285.8	-	130.2	13.6
L3108.1201-XYR	XY Roller	25	23.1	46.2	-	79.2	184.2	-	79.2	38.5
L3008.1203-XYR	XY Roller	25	23.1	46.2	-	79.2	184.2	-	79.2	38.5
L3108.2201-XYR	XY Roller	25	23.1	46.2	-	104.6	209.6	-	104.6	38.5
L3108.2202-XYR	XY Roller	50	23.1	46.2	-	104.6	260.4	-	104.6	38.5
L3108.2203-XYR	XY Roller	25	23.1	46.2	-	104.6	209.6	-	104.6	38.5
L3108.2204-XYR	XY Roller	50	23.1	46.2	-	104.6	260.4	-	104.6	38.5
L3108.3201-XYR	XY Roller	25	23.1	46.2	-	130.2	235.0	-	130.2	38.5
L3108.3202-XYR	XY Roller	50	23.1	46.2	-	130.2	285.8	-	130.2	38.5
L3108.3203-XYR	XY Roller	25	23.1	46.2	-	130.2	235.0	-	130.2	38.5
L3108.3204-XYR	XY Roller	50	23.1	46.2	-	130.2	285.8	-	130.2	38.5
L3108.1201-XYZB	XYZ Ball	25	23.1	46.2	249.7	79.2	184.2	8.4	79.2	13.6
L3108.1203-XYZB	XYZ Ball	25	23.1	46.2	249.7	79.2	184.2	8.4	79.2	13.6
L3108.2201-XYZB	XYZ Ball	25	23.1	46.2	287.8	104.6	209.6	13.2	104.6	13.6
L3108.2202-XYZB	XYZ Ball	50	23.1	46.2	338.6	104.6	260.4	13.2	104.6	13.6
L3108.2203-XYZB	XYZ Ball	25	23.1	46.2	287.8	104.6	209.6	13.2	104.6	13.6
L3108.2204-XYZB	XYZ Ball	50	23.1	46.2	338.6	104.6	260.4	13.2	104.6	13.6



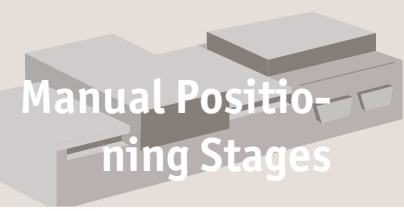
Order No.	Type	Travel	h ₁	h ₂	h ₃	l ₁	l ₂	l ₃	w ₂	Weight kg
L3108.3201-XYZB	XYZ Ball	25	23.1	46.2	313.2	130.2	235.0	27.7	130.2	13.6
L3108.3202-XYZB	XYZ Ball	50	23.1	46.2	364.0	130.2	285.8	27.7	130.2	13.6
L3108.3203-XYZB	XYZ Ball	25	23.1	46.2	313.2	130.2	235.0	27.7	130.2	13.6
L3108.3204-XYZB	XYZ Ball	50	23.1	46.2	364.0	130.2	285.8	27.7	130.2	13.6
L3108.1201-XYZR	XYZ Roller	25	23.1	46.2	249.7	79.2	184.2	8.4	79.2	38.5
L3008.1203-XYZR	XYZ Roller	25	23.1	46.2	249.7	79.2	184.2	8.4	79.2	38.5
L3108.2201-XYZR	XYZ Roller	25	23.1	46.2	287.8	104.6	209.6	13.2	104.6	38.5
L3108.2202-XYZR	XYZ Roller	50	23.1	46.2	338.6	104.6	260.4	13.2	104.6	38.5
L3108.2203-XYZR	XYZ Roller	25	23.1	46.2	287.8	104.6	209.6	13.2	104.6	38.5
L3108.2204-XYZR	XYZ Roller	50	23.1	46.2	338.6	104.6	260.4	13.2	104.6	38.5
L3108.3201-XYZR	XYZ Roller	25	23.1	46.2	313.2	130.2	235.0	27.7	130.2	38.5
L3108.3202-XYZR	XYZ Roller	50	23.1	46.2	364.0	130.2	285.8	27.7	130.2	38.5
L3108.3203-XYZR	XYZ Roller	25	23.1	46.2	313.2	130.2	235.0	27.7	130.2	38.5
L3108.3204-XYZR	XYZ Roller	50	23.1	46.2	364.0	130.2	285.8	27.7	130.2	38.5

Order No.	Through hole dia. d ₁	Load Z kg max.	Load X & XY kg max.	X moment load Nm max.	Y moment load Nm max.	Z moment load Nm max.
L3108.1201-XYB	-	13.6	13.6	2.05	1.95	1.95
L3108.1203-XYB	25	13.6	13.6	2.05	1.95	1.95
L3108.2201-XYB	-	13.6	13.6	3.21	3.04	3.04
L3108.2202-XYB	-	13.6	13.6	3.21	3.04	3.04
L3108.2203-XYB	38	13.6	13.6	3.21	3.04	3.04
L3108.2204-XYB	38	13.6	13.6	3.21	3.04	3.04
L3108.3201-XYB	-	13.6	13.6	4.25	4.05	4.05
L3108.3202-XYB	-	13.6	13.6	4.25	4.05	4.05
L3108.3203-XYB	51	13.6	13.6	4.25	4.05	4.05
L3108.3204-XYB	51	13.6	13.6	4.25	4.05	4.05
L3108.1201-XYR	-	13.6	38.5	5.81	5.53	5.53
L3008.1203-XYR	25	13.6	38.5	5.81	5.53	5.53
L3108.2201-XYR	-	13.6	38.5	9.10	8.60	8.60
L3108.2202-XYR	-	13.6	38.5	9.10	8.60	8.60
L3108.2203-XYR	38	13.6	38.5	9.10	8.60	8.60
L3108.2204-XYR	38	13.6	38.5	9.10	8.60	8.60
L3108.3201-XYR	-	13.6	38.5	12.05	11.47	11.47
L3108.3202-XYR	-	13.6	38.5	12.05	11.47	11.47
L3108.3203-XYR	51	13.6	38.5	12.05	11.47	11.47
L3108.3204-XYR	51	13.6	38.5	12.05	11.47	11.47
L3108.1201-XYZB	-	13.6	13.6	2.05	1.95	1.95
L3108.1203-XYZB	25	13.6	13.6	2.05	1.95	1.95
L3108.2201-XYZB	-	13.6	13.6	3.21	3.04	3.04
L3108.2202-XYZB	-	13.6	13.6	3.21	3.04	3.04
L3108.2203-XYZB	38	13.6	13.6	3.21	3.04	3.04
L3108.2204-XYZB	38	13.6	13.6	3.21	3.04	3.04
L3108.3201-XYZB	-	13.6	13.6	4.25	4.05	4.05
L3108.3202-XYZB	-	13.6	13.6	4.25	4.05	4.05
L3108.3203-XYZB	51	13.6	13.6	4.25	4.05	4.05
L3108.3204-XYZB	51	13.6	13.6	4.25	4.05	4.05
L3108.1201-XYZR	-	13.6	38.5	5.81	5.53	5.53
L3008.1203-XYZR	25	13.6	38.5	5.81	5.53	5.53
L3108.2201-XYZR	-	13.6	38.5	9.10	8.60	8.60
L3108.2202-XYZR	-	13.6	38.5	9.10	8.60	8.60
L3108.2203-XYZR	38	13.6	38.5	9.10	8.60	8.60
L3108.2204-XYZR	38	13.6	38.5	9.10	8.60	8.60
L3108.3201-XYZR	-	13.6	38.5	12.05	11.47	11.47
L3108.3202-XYZR	-	13.6	38.5	12.05	11.47	11.47
L3108.3203-XYZR	51	13.6	38.5	12.05	11.47	11.47
L3108.3204-XYZR	51	13.6	38.5	12.05	11.47	11.47



Micrometer Positioning XY, XYZ

front drive, large sizes



Manual Positioning Stages

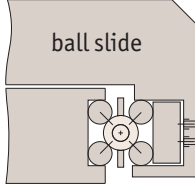




There are two different load ratings for these stages.

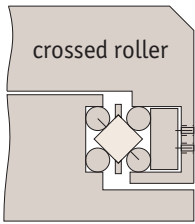
Ball slides:

These have precision steel balls rolling in the tracks. They are the least expensive, loads up to 28Kg.



Cross roller slides:

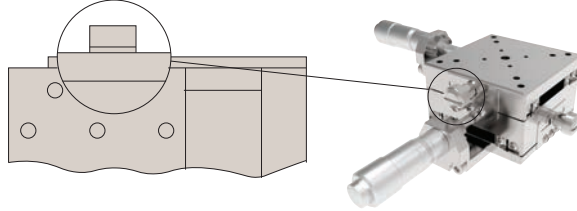
These have the same dimensions but have rollers allowing the slide to carry large loads and absorb greater moment loads up to 54Kg.



Locking options

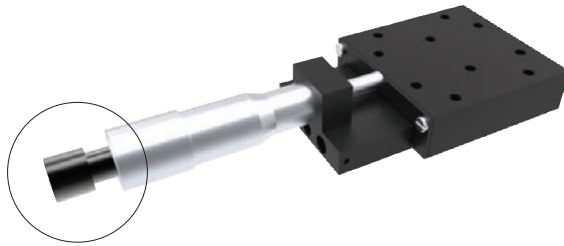
Posi-lock:

Allows locking of the carriage in place with a friction locking mechanism.



Locking micrometer:

Locking of the micrometer to fix the micrometer setting.



Front drive micrometer positioning stages



X Stage



XY Stage

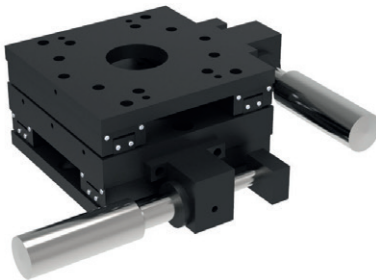


XYZ Stage

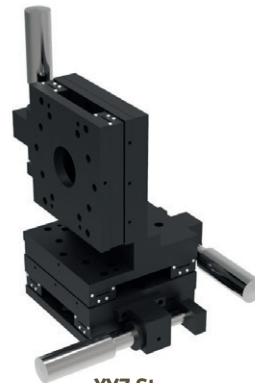
Side drive micrometer positioning stages



X Stage



XY Stage



XYZ Stage

Also available in stainless steel.