

L3001.APC1

LONG TRAVEL STAGES

Material

Aluminium.

Technical Notes

Allows two units to be mounted perpendicularly to one another. Supplied with T-

nuts and bolts.

Tips

Not suitable for L3004.E and L3004.ED units.

Size 40 - use holes 1 for carriages and 4 for

profile.

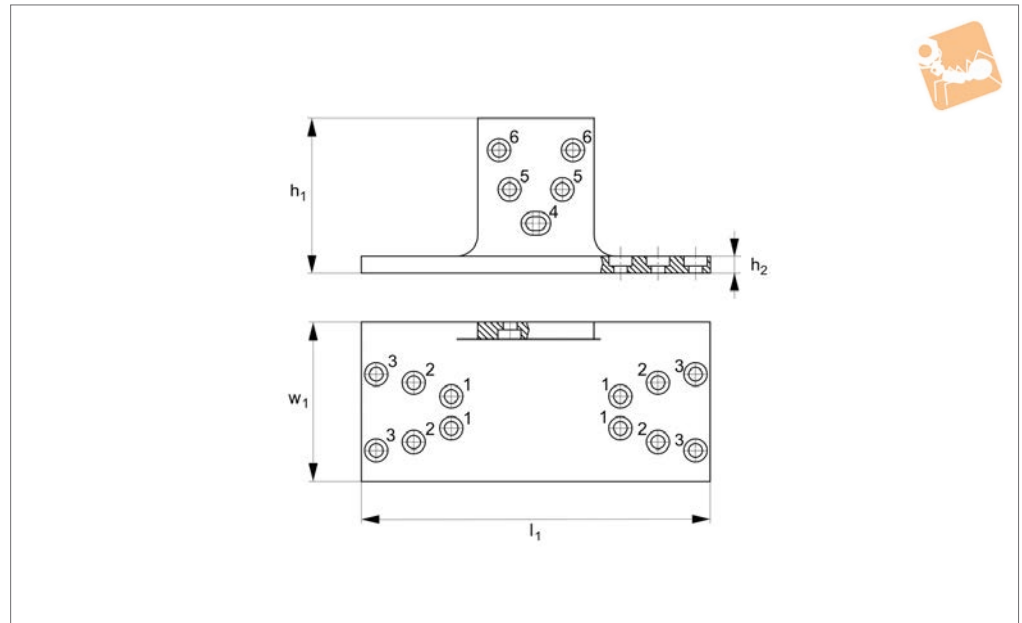
Size 55 - use holes 2 for carriages and 5 for profile.

Size 40 - use holes 3 for carriages and 6 for profile.

Order No.	l_1	l_2	l_3	l_4	w_1
L3001.APC-1	165	150	55	55	8



L3001.APC2



Material
Aluminium.

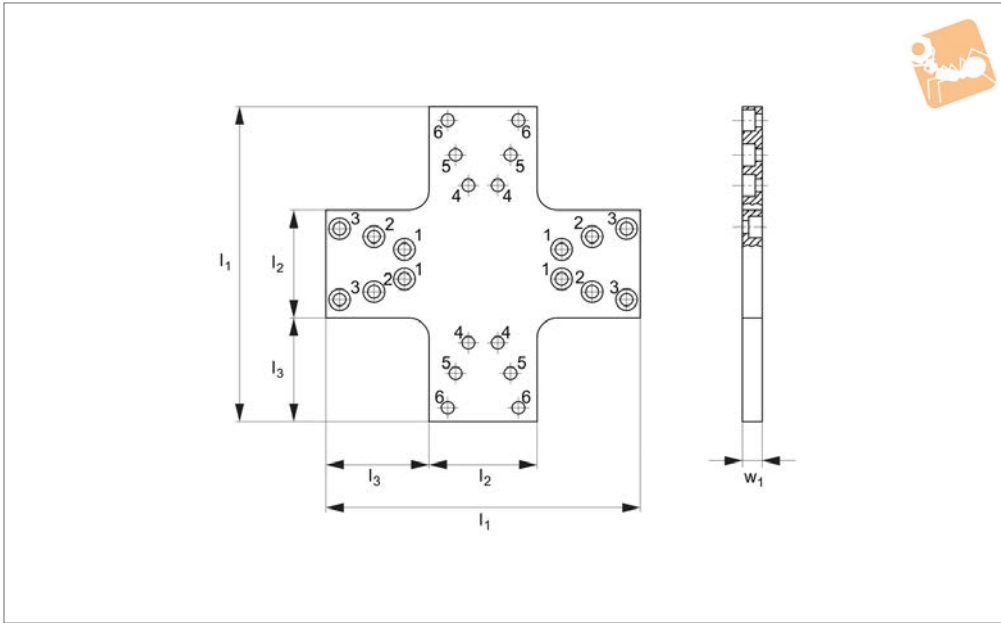
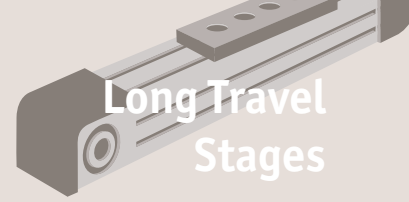
Technical Notes
Allows two units to be mounted at right angles to one another. Supplied with T-nuts and bolts.

The trolley of one unit can be mounted to the side of the other.

Tips
Not suitable for L3004.E and L3004.ED units.
Size 40 - use holes 1 for carriages and 4 for

profile.
Size 55 - use holes 2 for carriages and 5 for profile.
Size 40 - use holes 3 for carriages and 6 for profile.

Order No.	l_1	h_1	h_2	w_1
L3001.APC-2	165	73	8	75



L3001.APC3

LONG TRAVEL STAGES

Material

Aluminium.

Technical Notes

Allows two units to be mounted perpendicularly to one another. Supplied with T-

nuts and bolts.

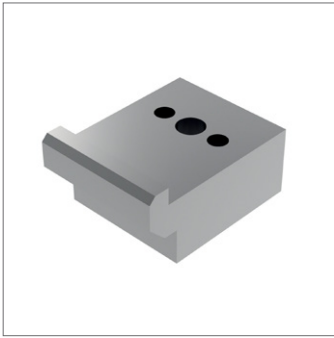
Tips

Size 40 - use holes 1 for carriages and 4 for profile.
Size 55 - use holes 2 for carriages and 5 for

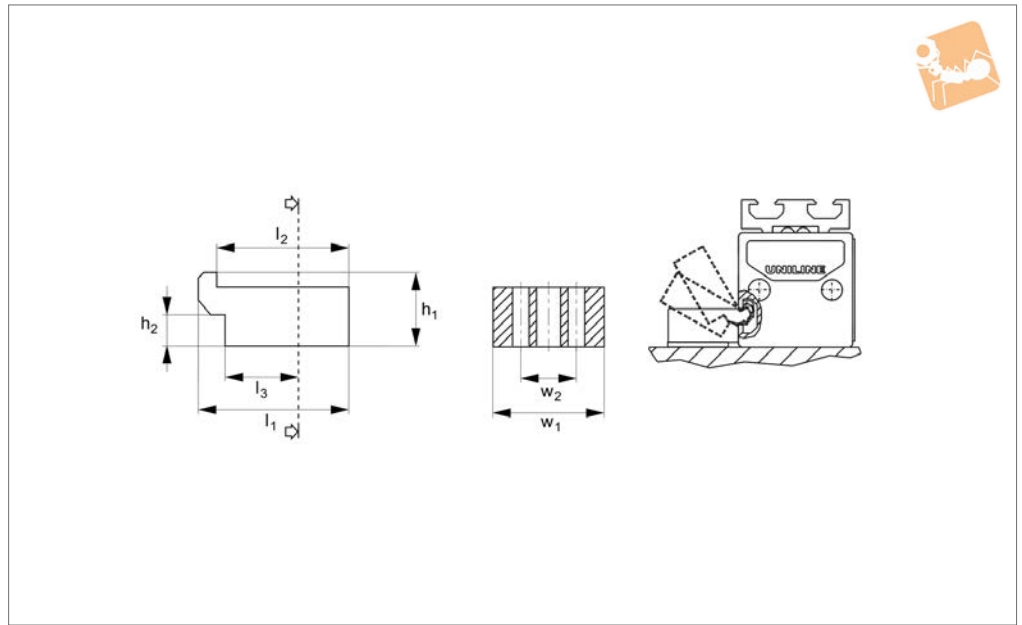
profile.

Size 40 - use holes 3 for carriages and 6 for profile.

Order No.	l_1	l_2	l_3	w_1
L3001.APC-3	160	55	52.5	10



L3001.APF2



Material
Aluminium.

Technical Notes
Used to bolt the Uniline units to a surface or to mount to units to one another with or

without an interface plate.
The clamps fit in the T-slots of any of the units.

Tips
Insert the lip of the clamp into the T slot of

the Uniline unit, position the clamp and if necessary shim to required height. Insert screws and tighten.
Not suitable for L3001.A100 units.

Order No.	l_1	h_1	h_2	l_2	l_3	w_1	w_2
L3001.APF-2	40	20	8.5	35	20	50	15